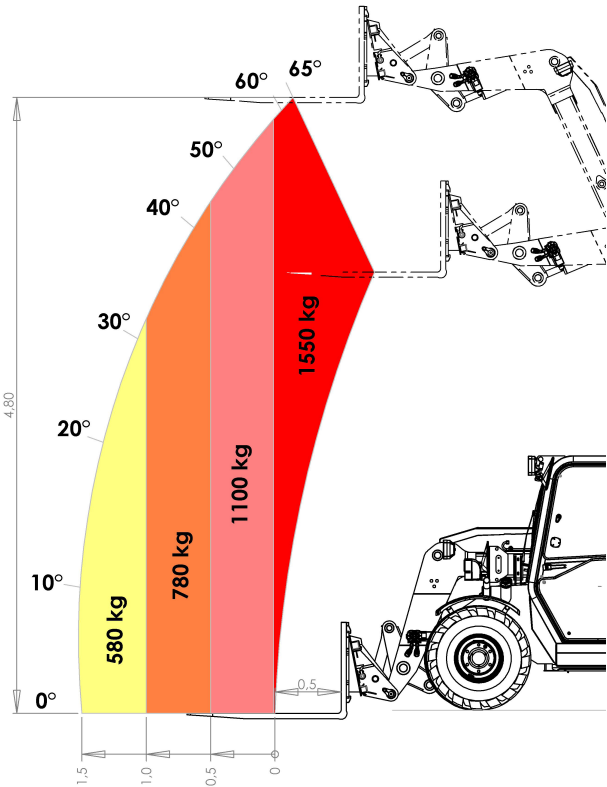


Technical data

THALER  
LOADER

THALER  
LOADER

	48T18
Engine: Yanmar 4 cyl.	3000U/min Yanmar 48 HP
Displacement	2190 ccm
Hydrostatic transmission	hydrostatic transmission with automative control and Inching pedal
Tires standard	10.75-15.3 AS
Working brake	Braking drums acting on all 4 wheels
Parking brake	Drum brake
Working hydraulics	Output of 66l/min
Steering system Standard:	Permanent 4-wheel-steering
Option:	Front wheel steering and crab steering
Speed	0-25 km/h 2-stage



Total length with shovel	4030 mm
Total length without shovel	3360 mm
Axle middle to shovel pivot pin	660 mm
Wheel base	2040 mm
Rear overhang	450 mm
Height over cabin	1940 mm
Load-over height	1000 mm
Height over shovel pivot pin	4900 mm
Load-over height - arm in - arm out	3400 / 4800 mm
Maxi. dumping height with maxi. dumping angle	2620 / 4000 mm
Reach at maxi. height and 68° dumping angle	290 mm
Reach at maxi. height and 30° dumping angle	880 mm
Standard width	1600 mm
Track width	1400 mm
Digging depth	80 mm
Ground clearance	260 mm
Inside turning radius	940 mm
4-wheel-steering	2 x 40°
Maxi. dumping angle	68°
Rollback angle in ground position	46°
Weight on front axle	1400 kg
Weight on rear axle	1500 kg
Empty weight	2900 kg
Operating weight	3200 kg

Download Videos:

<http://www.hoflader.com/index.php/Video.html>

48T18



The **THALER** - Loader with system  
We understand what you need.

Dealer

Thaler GmbH & Co. KG  
Weidinger Straße 24  
84570 Polling

Tel.: +49 (0) 8633 50550-0  
Fax: +49 (0) 8633 50550-10  
info@hoflader.com  
www.hoflader.com

The measurements are approximate and not contractual like the drawings and photos. They may show also special equipment. All data – subject to change and not contractual.

High stability  
Very good manoeuvrability  
High capacities in thrust



# 48T18

48HP

Telehandler with rigid chassis

1800 kg on the shovel pivoting pin

The manufacturer sets standards with the model 48T18 in the class of mini-telehandlers.

A step ahead by innovative technology.

The **48T18** designed as a low, powerful and versatile all-rounder for all jobs in material handling around the agricultural and construction industries. The overall height of 1.94 m permits to pass through nearly all doors and gates

The 2-speed hydrostatic transmission with automotive control allows a speed of 25 km/h.

Wide door opening with a large frame, swivelling side windows by 180°.

Adjustable multi-fonctionnal steering column.



Engine make: Yanmar, a maintenance-friendly engine, installed on the right hand side.



Automatic hitch with clevis



Lifting height 4,90 mtr.



Very good dumping angle (68°)



Main battery switch placed in cabin, so it is reachable at any time.

Rollback angle 46°  
Dumping angle 68°  
Extra high cooling capacities  
Adjustable steering column  
Main battery switch in cabin